

Bargraph Indicator *direct voltage, direct current*

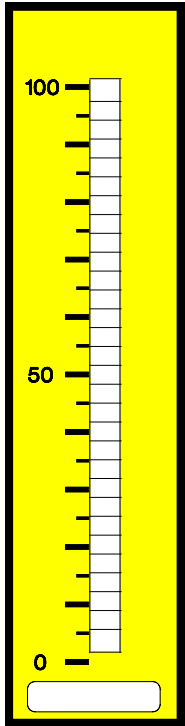
96x24

Optional: analog output

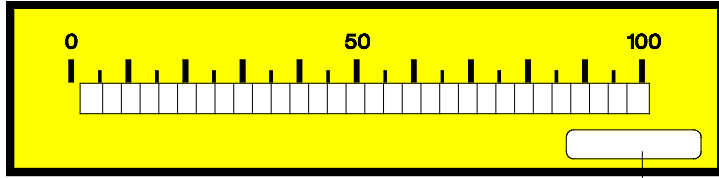
Allow to be placed side by side in grid and mosaics systems

Mounting into panels with thickness up to 50mm

888

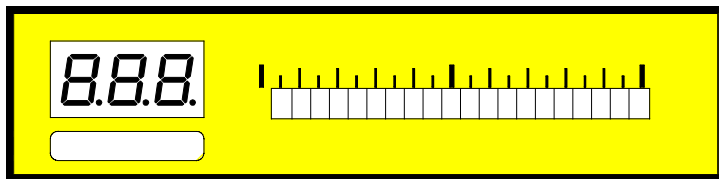


BVO 3.001.3x0

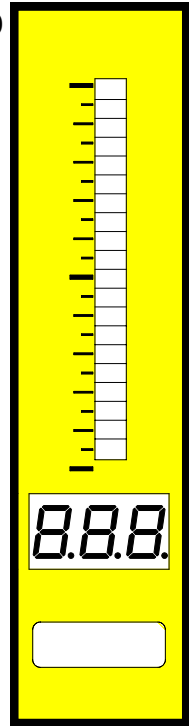


BHO 3.001.3x0

Dimension area



BHD 2.001.3x0



BVD 2.001.3x0

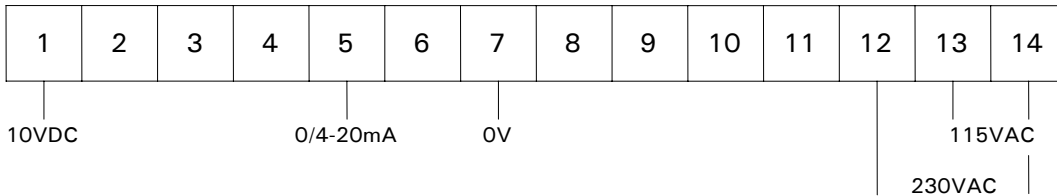
BVO 3.001.310B

BHO 3.001.310B

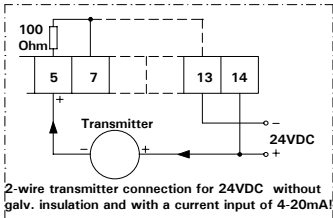
BHD 2.001.310B

BVD 2.001.310B

ORDER NUMBER OF TYPE



Transmitter connection



Power supply 24VDC

- galv. insulated - (14 = Plus, 13 = Minus)

BVO 3.001.330B

BHO 3.001.330B

BHD 2.001.330B

BVD 2.001.330B

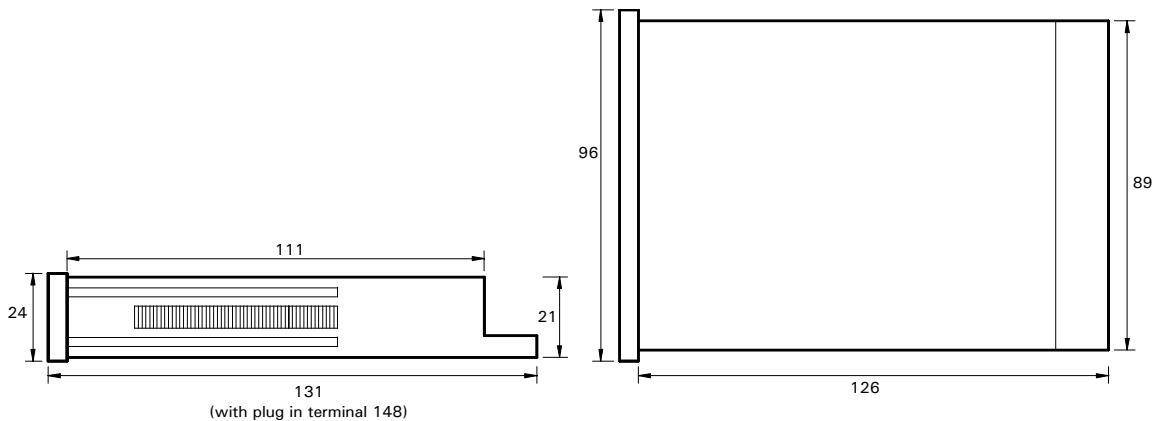
Options

- Protection IP54
- Protection IP65 (decimal point have to be pretended)
- Plug in terminal with protection IP40
- Plug in terminal with protection IP54
- Plug in terminal with protection IP65 (decimal point have to be pretended)
- DOT - indication
- Additional measuring inputs on demand
- Other power supplies on demand
- Setpoints on demand

Technical data, handling

Dimensions	Housing	96 x 24 x 131 including screw terminal
	Assembly cut out	92.0 ^{+0.8} x 22.0 ^{+0.6} mm
	Fastening	Special quick plastic clamp proper to fix in wall thickness up to 50mm
	Housing material	PC/ABS Blend, colour black, UL94V-0
	Protective System	At the front IP 40
		Connection IP00
	Weight	Approx. 0,290kg
	Connection	At the rear side via terminals up to 2,5mm ²
Input	Measuring range	0-10V, 0/4-20mA - all ranges are selectable via connection terminal Offset adjustment supported by offset potentiometer
	Input resistance	Ri with 10V = 124KΩ 20mA = 100Ω
Accuracy	Resolution	-99 to +999 for LED indication and 20 or 30 segments for bargraph display
	Nonlinearity	+/- 1 digit
	Temp. drift	100ppm/K
	Measuring principle	Dual-Slope-Integration for 3 digit display
Power unit:	Supply voltage	230/115VAC +/- 10% (50-60Hz), 24VDC +/-10% galv. insulated
	Consumption	Appr. 2VA
Indication:	Display	LED with seven segments, 7mm high, red 3 digit = indication 999 Choicable with 20 bars or 30 bars (3 digit display not available)
	Overflow	Indication of EEE
	Decimal point	Adjustable by bridging on front side
	Indication time	0,25s
Ambient conditions	Working temperature	0 up to + 60 °C
	Storing temperature	-20 up to + 80 °C

Housing:



CE-sign
For unlimited use of the instrument within the directives for electromagnetic compatibility 89/336/EC analog input wires have to be used with shielded cable and cable's shield connected to earth ground at one end only.

Setting

1. Connect the instrument according to the wiring diagram and turn power on.
2. Adjustment of indication value: Detach the front pane with a small screwdriver leading between front pane and housing frame.
3. Set the maximum input voltage/current and adjust the desired indication value by means of the potentiometer.
4. In order to achieve maximum value indication of 999, the following minimum input voltages are required at the various measuring inputs:

Measuring input	10V	20mA
U/I min	4.4V	9mA
U/I max	12V	25mA

5. With input voltages smaller than U/I min, maximum value indication is not available!
6. Adjustment of decimal point by jumper.

